

th=O™

2324
season

Sondheim

SONDHEIM TRIBUTE REVUE



Music and Lyrics by **Stephen Sondheim**

Directed by **Fred Anzevino**

Co-Choreographed/Associate Directed by
J Alan & Jenna Schoppe

Music Directed by **Carolyn Brady**

Assistant Music Directed by **Evelyn Ryan**

Mar 8-Apr 28, 2024



Theo is committed to creating a culture of **belonging** for every person in our community. A culture of belonging is established through the principles of equity, diversity, inclusion, and accessibility. **In order to succeed in a culture of belonging we must recognize and honor those who came before us, as well as provide welcoming and brave spaces for those who are with us today:**

- Theo sits on the traditional homelands of the Council of Three Fires, the Ojibwe, Potawatomi, and Odawa as well as the Menominee, Miami and Ho-Chunk Nations.
- Theo also acknowledges that the field of theatre has traditionally excluded members of the global majority, including Black, Indigenous, and people of color, and commits to working to dismantle the legacy of colonization and racism in this country.
- We acknowledge that the United States was built at the often-fatal expense of forcefully enslaved Black people. We commit to working towards the continued liberation of Black people through our work both on and offstage.
- We believe every person is born with dignity and humanity, including, but not limited to, race, gender, socioeconomic status, religion, country of origin, ability, body size, sexual orientation, and gender.

We thank you for honoring these commitments to equity, diversity, inclusion, and accessibility for all our patrons. All underrepresented voices—past, present, and future—have a home here at Theo.

AUDIENCE AGREEMENT

All are welcome here. As such, Theo has a zero-tolerance policy towards harassment and hate-speech. Those violating this policy will be asked to leave. Thank you in advance for your cooperation.

To read these acknowledgements in their entirety, please visit theo-u.com/mission-values

ABOUT OUR RESTROOMS

Theo commits to providing accessible and all-gender restrooms as an important way to show full access and inclusion. We believe that everyone benefits from accessible (ADA compliant) and all-gender restrooms including, but not limited to, transgender and gender diverse individuals, people with a disability, parents/caregivers whose children are a different gender from them, and people with caregivers who are a different gender from them.



THOUGHTS FROM THE CREATIVE TEAM

“Ultimately this is the story of Sondheim. We wanted the opportunity to honor his work through our work and this production is Theo coming back to itself. We started as a cabaret company, and we are thrilled for this unique opportunity to utilize Sondheim’s music and create something that is for our audience’s that truly won’t be seen anywhere else.”
—FRED ANZEVINO

“Sondheim is an ICON to me for several reasons. I enjoy the complexity and depth of his material as both a musician and an actor. My most favorite theatrical experience in college was playing the Beggar Woman and later my Chicago debut would be in the same role. Studying the depths Sondheim’s compositions as both a singer and today a music director really flexes the creative muscles and feels incredibly cathartic to bring to life! While these pieces are true gems within their larger work, we get to play with them a bit. Perhaps a different voice type telling the story, a mash-up based on a like theme, or a song juxtaposed against the other

showing a tongue-in-cheek contrast if you will. We are simultaneously celebrating Sondheim’s art and crafting it into our own unique presentation.”
—CAROLYN BRADY

“Sondheim has always held a very special place in my heart. Into the Woods is the reason I went to school to study Musical Theatre. I have fond memories of mining the lyrics with friends, collecting all the cast recordings and DVD’s possible from the Library (Pre-Spotify/streaming), and hunting down Evening Primrose on eBay to find out the context of those four beautiful songs at the end of The Frogs Album!

So often as actors, ‘type’ plays a huge part in determining which roles you can play, what songs you sing, and ultimately what stories you tell. This Revue has given us an opportunity to interpret incredible material in extraordinary new ways. Some familiar songs, quite a few deep cuts, but with an eye toward the future - asking what new meaning and life can come from these monumental works.”
— J. ALAN

Sondheim studied elements of modernist classical composition, which makes his music extremely unique in the theater world. I think this musical flexibility is what enabled him to explore complicated and confusing emotions with uncanny depth- his lyrics and melodies implant themselves in your brain and refuse to leave.
—EVELYN RYAN


“This revue is so special because it represents the team that created it. We combed through Sondheim’s entire canon (admittedly, a fun task), and picked the songs that not only represented his genius, but spoke to us. I’m also proud of how much we’ve been able to tailor this show to our performers. “New key? You got it. Special skill you’d like to feature? Sure thing, we’re inspired to create something just for you.”

In losing Sondheim, we lost a titan of our industry. To create this show in his honor, has been a great privilege.”
—JENNA SCHOPPE

FOLLOW US ON

 /TheoUbique

 @TheoUbiqueCabaret

 @TheoUbiqueChicago

Sondheim

SONDHEIM TRIBUTE REVUE

MUSIC AND LYRICS BY STEPHEN SONDHEIM

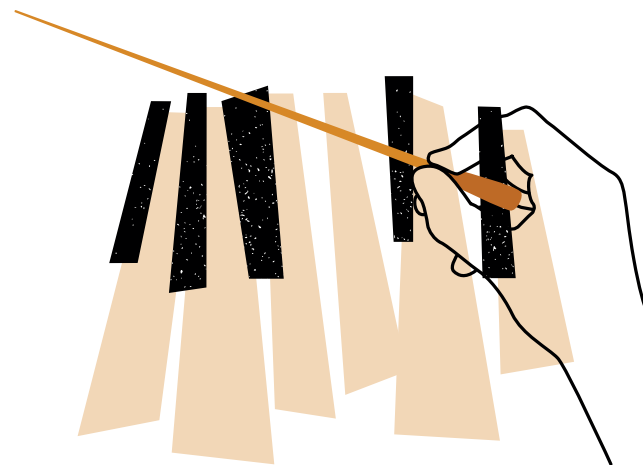
Licensed by special arrangement with Music Theatre International
with the permission of The Estate of Stephen Sondheim.

PRODUCTION STAFF

DIRECTOR	Fred Anzevino (<i>he/him</i>)
CO-CHOREOGRAPHER/ ASSOCIATE DIRECTOR	J Alan (<i>J/she</i>)
CO-CHOREOGRAPHER/ ASSOCIATE DIRECTOR	Jenna Schoppe (<i>she/her</i>)
MUSIC DIRECTOR	Carolyn Brady (<i>she/they</i>)
ASSISTANT MUSIC DIRECTOR	Evelyn Ryan (<i>she/her</i>)
SET DESIGNER	Manuel Ortiz (<i>he/him</i>)
CO-LIGHTING DESIGNER	Maggie Fullilove-Nugent (<i>she/her</i>)
CO-LIGHTING DESIGNER	Josiah Croegaert (<i>he/him</i>)
COSTUME DESIGNER	Bob S. Kuhn (<i>he/him</i>)
SOUND DESIGNER	Matthew R. Chase (<i>he/him</i>)
STAGE MANAGER	Shelby Burgus (<i>she/her</i>)
AUDIO ENGINEER	Isaac Mandel (<i>he/him</i>)
TECHNICAL DIRECTOR	Carl Herzog (<i>he/him</i>)
SCENIC CHARGE	Rose Johnson (<i>they/them</i>)
SCENIC PAINTER	Jose Martinez (<i>he/they</i>)
PRODUCTION ELECTRICIAN	Jackson Mikkelsen (<i>he/him</i>)
CASTING DIRECTOR	Christopher Pazdernik (<i>any</i>)

The videotaping or making of electronic or other audio and/or
visual recordings of this production is strictly prohibited.

All cast and staff are fully vaccinated against COVID-19.
At Theo, masks are strongly encouraged.



CAST

Elya Bottiger (*she/her*)
Max DeTogne (*he/him*)
Ismael Garcia (*they/he*)
Joe Giovannetti (*he/him*)
Maliha Sayed (*she/her*)

SWINGS

J Alan (*J/she*)
Melody Murray (*she/her*)

BAND

PIANIST Carolyn Brady (*she/her*)
ALT. PIANIST Evelyn Ryan (*she/her*)

PRODUCTION SPONSORS



MICHAEL & MONA HEATH

SONG LIST

The performance will include the songs listed below and will be performed in two acts, with a 15-minute intermission.

SATURDAY NIGHT (1954)

Class

That Kind of a Neighborhood

A FUNNY THING HAPPENED ON THE WAY TO THE FORUM (1962)

Love, I Hear

ANYONE CAN WHISTLE (1964)

Anyone Can Whistle

Me and My Town

There Won't Be Trumpets

COMPANY (1970)

Being Alive

Company

You Could Drive A Person Crazy

FOLLIES (1971)

Broadway Baby

Could I Leave You?

The Story of Lucy & Jessie

A LITTLE NIGHT MUSIC (1973)

The Glamorous Life

In Praise of Women

THE FROGS (1974/2004)

Hades

Hymn to Dionysos

PACIFIC OVERTURES (1976)

Pretty Lady

SWEENEY TODD: THE DEMON BARBER OF FLEET STREET (1979)

Green Finch and Linnet Bird

Kiss Me

Pretty Women

MERRILY WE ROLL ALONG (1981)

Not a Day Goes By

Opening Doors

Our Time

SUNDAY IN THE PARK WITH GEORGE (1984)

Finishing the Hat

Sunday in the Park with George

INTO THE WOODS (1987)

Agony

No One is Alone

ASSASSINS (1990)

Unworthy of Your Love

PASSION (1994)

Happiness

I Wish I Could Forget You

No One Has Ever Loved Me

ROAD SHOW (2008)

The Best Thing That Ever Has Happened

Waste

BIOGRAPHIES



ELYA FAYE BOTTIGER

(she/her; Performer)

Favorite Sondheim: *Company*

THEO: Debut. **CHICAGO:**

Gypsy, Little Me, Applause, Babes in Arms (Porchlight);

The Little Mermaid (Chicago Shakespeare);

At Mister Kelly's (Three Cat Productions);

Marvelous Wonderettes (Open Door Rep.).

REGIONAL: *Joseph and the Amazing...*,

Wizard of Oz, Lend Me a Tenor, Moon Over

Buffalo, The Game's Afoot, Run For Your Wife

(Palace Theater); *Little Shop of Horrors, A*

Funny Thing Happened..., *Titanic, Scapino!*

(Timber Lake Playhouse). **Columbia College**

Chicago, BFA: Musical Theater. Represented

by Shirley Hamilton Talent.



MAXWELL J DETOGNE

(he/him; Performer)

Favorite Sondheim: *Company*

THEO: Jesus in *Jesus Christ*

Superstar (Jeff nom.) &

Matthew in *Altar Boyz*.

CHICAGO: Clyde in *Bonnie and Clyde*

(Kokandy; Jeff nom.) & Rob in *High Fidelity*

(Jeff nom.). **REGIONAL:** Jon in *Tick, Tick...*

Boom! & Dan in *Next to Normal* (Dunes

Summer Theatre). Graduated from North

Central College. Very excited to be back in

Chicago creating a show with some familiar

faces and some new friends!



ISMAEL GARCIA

(they/he; Performer)

Favorite Sondheim:

Sweeney Todd or *Sunday*

in the Park with George

THEO: *The Threepenny*

Opera (Ensemble), *Things We Don't Say*

(Performer), *Baked!* (ASM), *Assassins*

(ASM). **KOKANDY:** *Sweeney Todd* (Beggar),

Spongebob (Patrick). **PORCHLIGHT:** *New*

Faces Sing 1984 (Performer/Cellist).

Outside the theater doors, they can be

found cooking, making music, thrifting, or

haunting the aisle of a local bookstore.

Con tanto amor <3



JOE GIOVANNETTI

(he/him; Performer)

Favorite Sondheim:

Into the Woods

THEO: *The Full Monty,*

The Most Happy Fella (Jeff

nom., Supporting Actor). **CHICAGO:** *Sunset*

Boulevard, A Chorus Line (Porchlight Music

Theatre); *All That He Was* (PrideArts).

MS Leadership for Creative Enterprises,

Northwestern University; BME Music

Education, Indiana University. For Molly.

joe-giovannetti.com | @joegio



MALIHA SAYED

(she/her; Performer)

Favorite Sondheim:

Sweeney Todd (*Into the*

Woods close second)

THEO: Debut. **CHICAGO:**

Arabia, Arabia! (The Plagiarists), *The Polar*

Express Train Ride (Rail Events Productions),

Candlewood Lake: New Musical (Workshop,

Pemberley Productions). **TV/FILM:** "Covert".

Ithaca College, BFA in Musical Theatre.

Alongside performing, she enjoys writing

stories for the screen, stage, and page.

Represented by Gray Talent.



J ALAN (J/she);

Co-Choreographer &

Associate Director; Swing)

Favorite Sondheim:

Merrily We Roll Along

THEO: *8-Track, Once Upon a*

Mattress, Best Little Whorehouse in Texas &

Things We Don't Say. She is grateful for her

friends, and partners at Starbucks for their

continued support!



MELODY MURRAY

(she/her; Swing) **Favorite**

Sondheim: *Into the Woods*

THEO: Debut. **CHICAGO:**

Debut. Graduate of

University of West Florida

with a specialization in musical theater.

Beyond performing, she enjoys yoga and

cooking. Represented by Gray Talent Group.

FRED ANZEVINO (he/him; Director

& Artistic Director) **Favorite Sondheim:**

Passion (directed at Theo in 2014)

Fred has had the distinct honor of serving

as Artistic Director of Theo since the

company's inception in 1997. A graduate

of Rhode Island College, he studied at the

American Academy of Dramatic Arts (NYC)

and the George Washington University's

MFA acting program. A five-time Jeff

Award winning director (Non-Equity), he

continues to remain in awe and wonder of

the extraordinary talent and commitment

that is the lifeline of Chicago's storefront

theater. A very special thank you to our

artists, patrons, donors, board of directors, and staff—especially our producing director Christopher Pazdernik—and the City of Evanston, without whom this would not be possible. “Always moving forward with compassion, forgiveness and concern, through the eyes of everyone.”

CAROLYN BRADY (*she/they; Music Director & Pianist*) Favorite Sondheim: *Sweeney Todd & A Little Night Music*

THEO: Debut. CHICAGO: *Cinderella, Shrek, Christmas Carol, A Chorus Line* (Jeff nom.) (Drury Lane); *Elephant & Piggie* (Marriott); *How to Lobster* (Steppenwolf); *Matilda* (Paramount School of the Arts); *Meet Me In St Louis, The Who's Tommy* (both Jeff noms.), *Dear World, Kiss Me Kate, The Wedding Singer* (Circle Theatre). Carolyn operates a multi-genre national voice studio of clients who've appeared in the Broadway casts of *Book of Mormon & Almost Famous*; national tours of *The Prom, School of Rock, & Mean Girls*; NBC's *The Voice & Walt Disney World*. She has served on music and theatre faculties at Roosevelt, Loyola, & Saint Xavier Universities. She's excited to return to the smaller, intimate theater where she began her performing roots in Chicago. Her most treasured role is being Mom to Cameron & Jack.

JENNA SCHOPPE (*she/her; Co-Choreographer & Associate Director*) Favorite Sondheim: *Follies*

THEO: *Godspell, Once Upon a Mattress*, (both Jeff noms.), *The Best Little Whorehouse in Texas & The Threepenny Opera*. CHICAGO: *The SpongeBob Musical* (Kokandy, Jeff nom.); *Yank!* (Pride Films & Plays, Jeff Award for Best Choreography); *Nonsense, Call Me Madam, Do Re Mi, The Rink* (Porchlight Revisits); *Kinky Boots, Mamma Mia!* (Highland Park Players); *Bobbie Clearly* (Steep). Up next: Choreographing *9 to 5* at Metropolis.

EVELYN RYAN (*she/her; Asst. Music Director & alt. Pianist*) Favorite Sondheim: *A Little Night Music & Passion*

THEO: *Assassins*. CHICAGO: *The Mystery of Edwin Drood* (Blank), *Nonsense* (Up & Coming). Evelyn graduated from DePaul University twice, earning degrees in Music Composition and Sustainable Urban Development. In her free time, she takes pictures and thinks about birds.

MATTHEW R. CHASE (*he/him; Director of Production & Sound Designer*) Favorite Sondheim: “To be determined...”

THEO: *Assassins, Baked!* (Sound Design), *Hedwig and the Angry Inch* (Assoc. Sound Design). CHICAGO (SOUND DESIGN): *Anything Goes, Ernest Shackleton Loves Me, Cabaret, The Apple Tree, Rent, Clear, Spring Awakening, Passing Strange & Nonsense* (Porchlight); *Shrek, The Producers & Pippin* (Music Theatre Works); *Who's Holiday* (Theater Wit); *Elephant And Piggie's We Are in a Play* (Marriott). CHICAGO (PROD. MGR.): *Spring Awakening and Broadway in your Backyard* (Porchlight); *Mary's Seacole and Heisenberg* (Griffin). Matthew is Director of Production here at Theo Ubique, where his credits include *Assassins, Baked, The Threepenny Opera & Passing Strange*, and the resident Production Manager at Theater Wit, where his credits include *Inanimate, Who's Holiday!, Household Spirits, The Whistleblower, Hurricane Diane & Mr. Burns, a Post-Electric Play*.

JOSIAH CROEGAERT (*he/him; Co-Lighting Designer*) Favorite Sondheim: *Follies*

THEO: *Baked!, Best Little Whorehouse in Texas, The Threepenny Opera* (Associate), *Godspell* (Assistant) CHICAGO: *Mothers* (The Gift), *Last Hermanos* (Red Orchid) ASSOCIATE: *What the Constitution Means to Me* (Timeline), *RENT* (Porchlight) ASSISTANT: *The Lifespan of a Fact* (Timeline), *Household Spirits* (Theater Wit), *Fen* (Court), *Wife of a Salesman* (Writers). Graduate of Columbia College Chicago. Josiahcrodesign.com

MAGGIE FULLILOVE-NUGENT (*she/her; Co-Lighting Designer*) Favorite Sondheim: *Sweeney Todd*

THEO: *Cabaret, Godspell, & The Threepenny Opera*. CHICAGO: *The Magic Play* (Goodman); *Too Heavy for Your Pocket and What the Constitution Means to Me* (TimeLine); *Sunset Boulevard & Rent* (Porchlight); *Endgame, Six Characters in Search of An Author & The Threepenny Opera* (Hypocrites); *Burning Bluebeard* (Ruffians); *Roustabout, Fake Lake, Wildcats & 44 Plays for 44 Presidents* (Neo-Futurists). Maggie is currently Director of Production at TimeLine Theatre and a leader of the Chicago Green Theatre Alliance. She is dedicated to moving the Chicago Theatre Community towards

safer, more sustainable and equitable practices, while lighting them beautifully. She would like to thank her supportive friends and family, and especially Josiah, the best lighting partner in town.

BOB KUHN (*he/him, Costume Designer*) Favorite Sondheim: *Act 1 of Sunday in the Park with George*

THEO: *Working, Hedwig and the Angry Inch* (Jeff nom). CHICAGO: *Priscilla, Queen of the Desert* (Jeff Award, Best Costume Design), *Hair* (Jeff nom.) & *Rock of Ages* (Mercury Theater); *A Chorus Line* (Porchlight); *Bonnie and Clyde, Heathers* (Kokandy); *White Christmas* (Drury Lane); *I Am My Own Wife, Time is on Our Side* (About Face). Bob is currently adjunct faculty at Loyola University, serving as costume shop floor manager and staff draper.

MANUEL ORTIZ (*he/him, Scenic Designer*) Favorite Sondheim: *West Side Story*

THEO: *The Best Little Whorehouse in Texas*. CHICAGO: *Household Spirits* (Theater Wit), *Kelly Girls and Wise Guys* (Factory Theater). Manuel thanks his amazing family and friends for all their love and support. Special shout out to my amazing husband, Corey Mills, for being my strongest rock and cheerleader!

SHELBY BURGUS (*she/her; Stage Manager*) Favorite Sondheim: *Sunday in the Park with George*

THEO: Debut. CHICAGO: *The Kelly Girls and Last Night in Karaoke Town* (Factory Theater), *Happy Birthday Mars Rover* (Passage Theatre), *Human Resource(s)* (Theatre Evolve), *Southern Comfort* (Pride Arts), *Scraps* (NAFT) and *The Spitfire Grill* (Refuge Theatre Project).

CARL HERZOG (*he/him; Technical Director*) Favorite Sondheim: *West Side Story*

THEO: *My Way, The Bridges of Madison County* (Jeff nom), *The Threepenny Opera* (Jeff nom) & *The Best Little Whorehouse in Texas* (TD). CHICAGO/TD: *Eurydice* (Writers) and *Wise Guys* (Factory). Carl teaches Scenic Carpentry at Loyola Jesuit High School, is the Master Carpenter at Writers Theatre, and builds for many storefront theatres around Chicagoland. He is so thankful for Theo and considers this his company an artistic home. “Each time I find myself flat on my face I pick myself

up and get back in the race.” NEXT UP: Gyp DeCarlo in *Jersey Boys* (Mercury).

ROSE JOHNSON (*they/them; Scenic Charge*) Favorite Sondheim: *Sweeney Todd*

CHICAGO/SCENIC DESIGN: *Agnes of God* (Jeff nom.), *The Great Kahn and Wolves* (Redtwist); *Lane Call* (Factory); *Murder, ReWrote* (Hell in a Handbag), and *The Once and Future Festival*. As a charge artist, they've worked with Raven, Rivendell, Shattered Globe, Congo Square, and Theo Ubique. BA: Theatrical Design and Technology, Columbia College Chicago. UP NEXT: *S. Paradox* (Babes with Blades).

JACKSON MIKKELSEN (*he/him; Production Electrician*) Favorite Sondheim: *Into the Woods*

THEO: *The Best Little Whorehouse in Texas* (Swing), *Baked & Assassins* (Prod. Electrician). CHICAGO: *The Snow Queen* (Marriott), *Ragtime* (Metropolis), *The Wild Party* (Blank), *The Tempest* (Oak Park Festival Theatre). In addition to performing, Jackson has worked as an electrician with *Hell in a Handbag, Black Button Eyes, City Lit, Redtwist, and Prop Theatre*. BFA in Musical Theatre from Chicago College of Performing Arts at Roosevelt University, where he now works as the department's lead electrician. jacksonmikkelsen.com

CHRISTOPHER PAZDERNIK (*any, Producing Director*) Favorite Sondheim: *Anyone Can Whistle*

THEO: *Godspell* (Director), *Man of La Mancha* (Stage Manager) & *Time After Time* (Creative Consultant). CHICAGO & REGIONAL/DIRECTING: *Avenue Q* and *Spelling Bee* (Music Theatre Works), *Who's Holiday* (Theatre Wit); *Colors of My Life* (CCPA/Roosevelt University); *Big River* (Round Barn); *Carrie* (Ohio Northern University); *High Fidelity* (Jeff Awards, Best Director & Best Production), *The Spitfire Grill, The Last Session & Hands on a Hardbody* (Refuge Theatre Project); *The Story of A Story* (Underscore); eight productions for Porchlight Revisits, and three years of the Non-Equity Jeff Awards. CHICAGO/CASTING: *Hedwig & the Angry Inch* (Haven), *Gods & Monsters* (Frame of Reference), *Miracle* (World Premiere), Porchlight Music Theatre & CPA Theatricals. An openly HIV+ artist, Christopher thanks you for supporting live theater. IG: @see.paz



HELP THEO THRIVE!

Your financial support helps us maintain our high standards of producing quality productions and the costs of managing the phenomenal growth we've experienced in recent years. Support Theo at the \$250 level and receive access to special behind-the-scene events including creative team conversations and exclusive donor only performances!

theo-u.com/donate



BROADWAY OPEN MIC

MAR 13 & APR 10 8-11PM



Chicagoland's resident Piano Man comes to Theo: **Alex Newkirk** will be tickling the ivories the second Wednesday of every month from 8-11PM, and accompanying anyone who wants to come in and sing showtunes! Join us for a drink and a song on the second Wednesday of every month!



Join us—bring sheet music to sing a song, or just listen! No cover!

SARAH SIDDONS SOCIETY

A society dedicated to supporting and embracing Chicagoland theatre students and community through scholarships, grants and professional educational opportunities. Please visit our website to become a member or to learn more!

sarahsiddonssociety.org



2022 Sarah Siddons Award winner, Sandy Duncan with the 2022 scholarship recipients.

YOUR SUPPORT MEANS THE WORLD.

In addition to attending our shows, additional financial support helps us maintain our high standards of producing quality productions and the costs of managing the phenomenal growth we've experienced in recent years.

It's always the perfect time to donate, because no matter when you make your gift, you'll always enjoy our donor benefits for an entire year!

	Executive Producer's Circle \$5,000+	Producer's Circle \$2,500 - \$4,999	Associate Producer's Circle \$1,000 - \$1,999	Director's Circle \$600 - 999	Patron's Circle \$250 - \$599	Sponsor's Circle \$100 - \$249	Donor +\$99
Invitations* to productions	4	3	2	1	-	-	-
Exclusive dinner with Theo leadership	✓						
Production sponsorship opportunity	✓	✓**					
Invitations to behind-the-scenes events	✓	✓	✓	✓	✓		
Program listing	✓	✓	✓	✓	✓	✓	
Website listing	✓	✓	✓	✓	✓	✓	✓

*All invitations at all levels are good for 2 people.

** Production element sponsorship opportunity.

Theo Cabaret Theatre is a 501(c)(3) non-profit theatre company incorporated in the State of Illinois. Donations are tax deductible.

For more information, or to make a donation, visit theo-u.com/donate or mail your tax-deductible donation to

Theo Ubique Cabaret Theatre
1751D W. Howard St., #294
Chicago, IL 60626

DONORS

We are thrilled by the support of our generous patrons and benefactors. The following represents gifts made between January 1, 2023 – February 15, 2024. If you feel you have been inadvertently left off of the list, please contact Christopher Pazdernik at producingdirector@theo-u.org.

EXECUTIVE PRODUCER'S CIRCLE: \$5,000+

Anonymous
Ann & Richard Carr
Mary Alice & Peter J. Costello
Eugene Dizon & Walter Stearns
Illinois Arts Council
Michael & Mona Heath
Jean Klingenstein
Pritzker-Traubert Foundation
The Saints

PRODUCER'S CIRCLE: \$2,500-4,999

Anonymous
Bob & Emily Carroll
Jim & Sue Campbell DeLapp
Evanston Arts Council
Mary & Ben Page
Jean Zuiker

ASSOCIATE PRODUCER'S CIRCLE: \$1,000-2,499

Anonymous
Alan F. & Carol Ross Barney
Shaun & Andy Block
Lori Cannon
James & Patricia Corirossi
Steven & Michelle Cucchiaro
Megan Elk & Rachel Schuldt
Brandon Eller
Dolcye Johnson
The Kleiman Family
Paul & Patty McCarthy
Ann Mottola
Michael Quoss
Robert & Barbara Richards
Joe & Betsy Roche Fund at The Chicago Community Foundation
Sophia Sieczkowski
Jeannemarie Sierant
Lynne Simon
Lisa & Randy White
Gary A. Willer MD; in honor of Jean Klingenstein

DIRECTOR'S CIRCLE: \$600-999

Courtney Crouse
David Gitomer
Dick Moran
Ann Rainey & Gary K. DeClark
Elizabeth Rude & Al Alvarez
John G. Slawson

PATRON'S CIRCLE: \$250-599

Niccole Alexander
Anonymous
Frank & Kathy Ballantine
Katie Beeks
Daniel Bender
Bonnie Bush & John Peart
Howard Clauser
Brenda Didier
Kathy Dunn
Marianne Embree
Suzanne & Vince Flood
Elliott Fredland
Mr. & Mrs. Manuel Galvan
Jill Gardner & Merle Shapera
Amy Goffman
Barry & Merle Gross
James R. Shaeffer & Margaret Lynn Hughitt
Linda Jenewein
Lori & Gary Kash
Adeline Krohmer & Clyde Steele
Bob & Judy Kucera
Dr. Paul M. Lisnek
Jan & Jerry Loew
James & Joannell McKenna
Maureen Meyer & Pat Smoody
Rebecca & Retha Mize-King
Ellie & Geoff Mogilner
Patrick & Mary Beth Pazdernik
Karla D. Petersen
Petrichor
Penelope & Toby Sachs
Ralph & Nancy Segall
The Servos Family
Margaret Shaklee
Mara & Daniel Silver-Schack
Hal & Elaine Taylor
Bryan Vanderhoof

SPONSOR'S CIRCLE: \$100-249

Anonymous
Heather Barefield
Donna Baskin
Carole Bass
Gail Bedessem
Susan & William Berg
Janice & Richard Berggreen
Leonard & Phyllis Berlin
Marco A. Bernal
BTS
David Braun
William Buchman & Lee Lichamer

Don Budzinski/
TheMotionDevotion.com
Rafael Castellanos
Cynthia Cheski & Scott Elliott
David & Lisa Chinitz
Daniel P. Collins
Lisa Disch
Thomas Dunn
Myra Epping & Jim Redlich
Brian Fallon & Fred Mahaffey
Jay Fisher
Michael Frankenstein
Andrea Friedman
Ruth Fuerst & James Block
Bill Gilmer & John Blackburn
Carol Glassroth
Ethel & Bill Gofen
Carla Gordon
Lorinda Grogg
James Grumley
Dorothy G. Harza
Martha Hudak
James A. Huttenhower
Ruth Johnston
Jamil Khoury & Malik Gallani
Judy Kotzin
Cathy Lorber
Joseph Mach
Michael McAdams & Spencer Gartner
Diane Meiborg & Roger Zacek
Catherine Melsheimer
Philip Meyer
Joe & Joan O'Connor
Lisa O'Keefe
Rod & Dorothy Patterson
Jo Peer-Haas
David & Carole Perlman
Les Pollock & Linda Schiffman
Mina Slater
Tom & Donna Ray
Mark Saltzman
Bob Sanders
Gary & Adelina Schneider
Jennifer Siegfried
Krista Simons Gliva
Lisa Stegink & Michael Erickson
Caryl Steinberg
Ruth Stevig
Susan & Nicklin
Kathy Wall
Susan F. Walsh
Georgene Wilson
Tina Yarovsky

ABOUT THEO

Theo was founded by Artistic Director Fred Anzevino in 1997 as a non-equity itinerant storefront theatre, influenced by his father's involvement in the nightclub business and his heritage as an Italian American. In 2004, Theo was incorporated as Theo Cabaret Theatre at the No Exit Cafe, focusing on musicals and revues, and reigniting the cabaret theatre trend in Chicago and launching a 14-year track record of critically-acclaimed and award-winning music theatre productions. Overall, Theo has produced nearly 100 shows and received over 60 Jeff Awards.

In 2018, Theo was selected by the city of Evanston to be the resident company at a new performance space on Howard Street, which is where you are tonight! We are grateful to our long-term supporters that make it all possible, unendingly appreciative of our talented artists, and we look forward to growing our family of supporters into the future. Thank you for joining us!

For more information, [visit theo-u.com](http://theo-u.com)

ACKNOWLEDGMENTS

Estación

DINING PARTNER



PRINTWORKS

SEASON PRINTER

TIMELINE THEATRE COMPANY
THE 4529 PROP SHOP
PARAMOUNT THEATRE
THE MERCURY THEATRE

THEO STAFF

PRODUCING/ARTISTIC

Fred Anzevino (Artistic Director)

Christopher Pazdernik
(Producing Director)

Matthew R. Chase
(Director of Production)

AUDIENCE SERVICES

John Weagly (Box Office Manager)

Lila Marooney, Julian Weslander
(House Managers)

MARKETING, GRAPHIC DESIGN AND PUBLIC RELATIONS

Arts ink, Inc.

Inquires can be directed to
Whitney Rhodes, whitney@artsink.org

ACCOUNTING

Solomon Hursey,
Michael Belanger
(Brilliant Squirrel Bookkeeping)

FOOD AND BEVERAGE

Niki Green (Bar Manager)

BUILDING STAFF

Marco A. Bernal
(C&M Cleaning Services)

USHERS

Volunteers provided by The Saints
www.saintschicago.org

BOARD OF DIRECTORS

Megan Elk - President

Jeannemarie
Sierant - Secretary

Dick Moran - Treasurer

Stephanie C. Clergé

Aimee Kleiman

Ann Rainey

Stephanie Servos

Fred Anzevino*

Christopher Pazdernik*

*Ex-Officio, non-voting member

DO YOU LOVE THEO?

Consider joining our Board of Directors! We are always looking for passionate audience members to join us in supporting the work of the theatre. Board Members help fundraise, plan events, introduce their networks to Theo and more! For more information, reach out to Producing Director Christopher Pazdernik at producingdirector@theo-u.org

THEATRE INFORMATION

Box Office
(773) 939-4101
boxoffice@theo-u.org

Mailing Address
Theo Ubique Cabaret Theatre
1751D West Howard Street, #294
Chicago, IL 60626

Online
theo-u.com



Member, League of Chicago Theatres



Member, Evanston Performing
Theatre Arts Collective



Member, Theatre Advocacy Project



A LITTLE NIGHT MUSIC

May 24 - Jul 14, 2024

Reserve your seats to Theo's final
Sondheim performance of the season!

theo-u.com • 773.939.4101

2324
season